



**THE**

**BROADWATER**

**COMMUNITY**

**CONNECTIONS**

**NEWSLETTER**



**Published by BCDC**

**Broadwater County Development Corp.**

**[bcdc@mt.net](mailto:bcdc@mt.net)**

# BROADWATER COMMUNITY CONNECTIONS NEWSLETTER

VOLUME 6, ISSUE 1

January 10, 2026

## Page Organization

3— BCT

3— Helping Hands

4—Fair

4— Canton Church

4—RHPI

4—250th Anniv. Survey

5—NW Energy

5—AARP Tax Aide

6—Grant Writing 101

7—STOKE

7—BCDC

8—STOKE Valentine Day  
Dinner

9—MT Farmer's Union

10—Wildfire Assessment

## Community Organizations

11— A—C

12— D —R

13— S —Z

Hello Everyone.

Welcome back to the Broadwater Community Connections Newsletter. I started this project with BCDC to coordinate all the non-profits in Broadwater County to assist in their fund raising and project coordination endeavors. I'm hoping this newsletter will be a catalyst for any non-profit, board, or community minded citizen to ask for or offer assistance, expertise or funds to benefit other organizations and share their ideas or needs. We all have the same drive and hope that we can make a difference for Broadwater County and, over the years, the little things we have done have made a huge impact for thousands of citizens. But there is so much more we can do. I have added some motivational quotes that I think fit the focus of this newsletter. Please share your comments about how this newsletter can grow to meet these efforts. BCDC's email is [bcdc@mt.net](mailto:bcdc@mt.net). My personal email is [hahnsupply@mt.net](mailto:hahnsupply@mt.net).

**I would really like to get this newsletter out to more people. Please share this with as many people as you can. If anyone isn't receiving this but would like to be included, please send a request to either of my emails.**

The next quarterly publication will be in April with special editions and notifications posted if necessary. I'm open to new ideas or if you would like to help with its production and publication, feel free to contact me.

John Hahn—BCDC co-chairman and treasurer

P.S. If I made any errors, in any of the articles, names and emails or formatting, I apologize. Community organizations have submitted and edited their own individual submissions. I reserve the right to edit grammatical errors but will strive to preserve pertinent content.

**Please review the contact list at the end for any updates. Thank you**

**Send updates to [bcdc@mt.net](mailto:bcdc@mt.net)**

**I have hidden a needle somewhere in one of the pages. See if you can find it!**



# BROADWATER COMMUNITY CONNECTIONS NEWSLETTER



## Broadwater Community Theater End-Of-Year Events Shine

Broadwater Community Theater board members outdid themselves with their efforts to organize fun and entertaining events during this year's holiday season. Chairperson LaRinda Spencer showed her talents by writing a great script for the Christmas Dinner Theater event held December 13 at the Lodge.

Local actors Chloe Johnson, Angela Johnson, Rehana Olson, Pat Plantenberg, Renee Bauer, Zach Johnson and Candice Marchetta performed "A Crazy Christmas" about the untimely death of Santa Clause. The interactive play kept the audience guessing the name of the murderer. It was difficult for people to eat their excellent dinner in between laughs at the actors' antics. The dinner, prepared by BCT's board members, was served by students from the STOKES group.

New Year's Eve at the Lodge is always special. This year found the hall filled with dancers under the watchful eye of instructor Matt Schmidt, owner of Swing Out Helena. Matt made the class fun and easy to learn for about 10 couples who learned the jitterbug, the two-step and various other dance moves. The evening began when Queen City Swing, a big band group from Helena, played great music for both talented dancers and the newly trained dance-class students. BCT board members served a beautiful appetizer table and beverages were enjoyed by all.

At a regular BCT board meeting, Chairperson LaRinda was honored with a certificate of appreciation for her many years serving on the Board and providing the incentive for others to use their talents and enthusiasm in offering the fine arts to Broadwater County patrons. Besides her theater talents, LaRinda did the work to make BCT a viable organization by writing the by-laws and articles of incorporation when BCT officially became a theater group in 2018.

Active members of the board of directors in addition to LaRinda, are Pat Plantenberg, Mary Mistek, Nancy Marks, Carla Amundson, Jim Domino, John Hahn, Tina Homann, Destiny Spencer, Vivian Boaz, Anne Hall, Crystal Taylor, Candice O'Hara, Dwight Thompson, Zander Johnson and Angela Johnson. The board thanks Lodge owner Tina Homann for giving the theater a home for its events and meetings.

A nonprofit organization, BCT is supported annually by sponsors who donate to keep theater alive in Broadwater County. In 2025 those sponsors were Jak's Heating and Air, East Helena; Nancy Marks, Bill Kearns, Patrick Plantenberg and Mary Mistek, Beth Ihle, Townsend Rotary, Jeannie Mainwaring, Jan Hubber, Ron and Mary Ann Salladay, Judy Schenck, Opportunity Bank, STOKES, John Hahn, Bob Saxby, Brian and Laura Obert, Chuck McLane, Dwight and Julie Thompson and the Retired Teachers Group.

To join the board or to become a sponsor for the 2026 year, please contact Pat Plantenberg at (406) 431-4615 or donate online at BCTMT.com.



## Helping Hands Townsend Buys a Home

Helping Hands Townsend has operated 2 Thrift stores in Townsend since 2016. The community has supported both stores faithfully through the years by volunteering to help run the stores, by donating cash and gently used items, and by shopping at the stores regularly. HHT has met all of their expenses and has given over \$112,000 in cash back to community members in need.

Because of the many challenges they've faced throughout the years with renting a building to house their operations, HHT decided to launch a capital campaign to BUY A HOME OF THEIR OWN. A building has become available and a benefactor has stepped up to provide the down payment for the purchase of that building! The Kids' Store at 323 Broadway will remain open while the new building is prepared.

Please donate to "Helping Hands Building Fund" at Opportunity Bank to help pay off the mortgage so HHT can continue to meet the needs of Broadwater County.

Submitted by Sheila Heavirland





# BROADWATER COMMUNITY CONNECTIONS NEWSLETTER

## It's Never Too Early to Think About the Fair!

Although, it may seem like it's a long way away, it will be August before we know it! The Broadwater County Fair and Rodeo will be held August 6-9<sup>th</sup>, 2026.



Watch for the Open Class Fair book to be coming out mid-April. You can already be starting to plan and make your exhibits! Fair books are also available online at <https://www.townsendfairgrounds.com/fair-information>. Did you know that you can enter a wide variety of items into the fair? Photography, poetry, art, baking, cooking, jelly, vegetables, leather work, jewelry, quilts, sewing, woodwork. The list can go on and on! If you can make it, there is more than likely a class for it! Open Class fair entries are generally due the first week of July. The exact date is yet to be determined for this year.

If you are interested in helping with the fair, please reach out! This annual event is put on mainly by volunteers, so we are always looking for extra hands- whether it is to help set up, check in open class entries, hang posters, make decorations, clean up or even make signs. We can find a job for almost anyone!

Hope to see everyone out at the fair in 2026!

Jessica Erickson, Broadwater County Fair Manager

416 Broadway Street, Townsend

[Fair@broadwatercountymt.gov](mailto:Fair@broadwatercountymt.gov) 406.266.9242

## Canton Church Restoration

The Canton Church wrapped up the 2025 season with our annual meeting in September and by hosting the Townsend Schools Middle School class for a history outing the first week in October. The history outing was the seventh annual event where the students are given a presentation on the history of the Canton Church and the History of Broadwater County.

Last summer we decided to upgrade our electricity at the Church. For years we have run an extension cord across the grounds to the backdoor of the historic Church. We felt that running the extension cord created a tripping hazard risk. So, after discussing the need for many years, board members Keith Kirscher and Bob Tootell installed in-ground wiring to outlets at the front door and the backdoor of the Church.

In keeping with our policy of retaining the original church as much as possible we did NOT run electricity into the church; but having the outlets right at the doors is much handier and does not create a tripping hazard.

We are hard at work lining up another great slate of summer events. Visit our website at <https://canton-church.org> for information about the historic church and what we are doing.

Submitted by Vic Sample



## Radersburg Historical Preservation Inc.

The summer was busy at the historic Radersburg School. RHPI Board president Al Smith took on sanding down and resurfacing the hardwood floors in the historic schoolhouse. Al's hard work has resulted in really upgrading the look of the schoolhouse and the continuing work to fully restore the building.

Of course, winter is pretty quiet at the Radersburg school – until the second annual Radersburg Ramble! January of 2024 was the inaugural year of the annual event featuring both a 5K and a 10K course. There were 34 runners at the first event all of whom had a great time running in a winter race. After the race, there was an award ceremony and a chili lunch.

The Radersburg Ramble chairman Karen Walton has announced that the Second Annual Radersburg Ramble will be held on January 24, 2026. Visit <https://radersburgramble.org> for more information and to register for the event.

RHPI looks forward to hosting the 5<sup>th</sup> annual Middle School History Outing. For the last 4 years RHPI, Preserve Broadwater History and the Broadwater County Museum have hosted the Townsend Schools middle school class at the Radersburg School. Broadwater County Museum curator Linda Huth does a presentation on the rich history of Radersburg. Afterwards the students are fed lunch before another presentation by Preserve Broadwater History at the Radersburg historic Methodist Church. The outing finishes with a visit to the Radersburg cemetery hosted by Jackie Smith.

Submitted by Vic Sample



## Townsend Community Input Needed!

2026 marks the 250th anniversary of the Declaration of Independence, and the Broadwater County Museum board is exploring the idea of hosting a Townsend Area Community Barbeque to celebrate this historic milestone.

Before planning begins, we want to hear from YOU.

👉 Would you attend a community-wide 250th Anniversary Barbeque on July 4<sup>th</sup>?

👉 What activities would you like to see?

👉 Would you be interested in volunteering?

👉 Are you part of a local organization, club, church, or business that might help plan, sponsor, or staff the event?

Your feedback will help determine whether this becomes a full community celebration.

Please send your comments to the Broadwater County Museum.

Email: [bwcomuseum@mt.net](mailto:bwcomuseum@mt.net)

Address: 133 N. Walnut, Townsend MT 59644

## NorthWestern Energy Warns Scammers Targeting Montanans

**Butte, Mont. – Jan. 7, 2026** – NorthWestern Energy is receiving wide-spread reports of scammers attempting to steal money from Montanans. These criminals are calling Montanans and falsely claiming energy service will be shut off unless an immediate payment is made.

These threats are not legitimate. Energy service providers never demand instant payment or threaten customers with sudden disconnection.

Customers with past-due accounts receive multiple notices well in advance of any service interruption. A service disconnection will never come as a surprise.

NorthWestern Energy urges Montanans to stay vigilant and avoid sharing personal or financial information with anyone demanding immediate payment.

Learn more about how to protect yourself from scammers—or report a scam attempt—at <https://www.northwesternenergy.com/scamalert>.



## Free In-Person Tax Preparation Service

AARP Foundation Tax-Aide offers free tax preparation to anyone of any age – especially if you are 50 or older or can't afford paid tax preparation.



In Your Area

### Helena AARP Tax-Aide Site

**FEBRUARY 5<sup>th</sup> to APRIL 11<sup>th</sup>**

**Helena Senior Citizen Center 200 S. Cruse Avenue**

**Thursday & Saturday - Appointments begin at 9:00 am**

**Call or text starting Jan. 15, 2026: 406.616.3080**

**Name(s), Mailing Address, Phone**

**\*Don't wait – make appointment now for the Tax season**

**Plan ahead as we do run out of available slots\***

**AARP Foundation**

D20248 (9/16)



# BROADWATER COMMUNITY CONNECTIONS NEWSLETTER



## Grant Writing 101

Allison Kosto, MSU Broadwater County Extension Agent January 9, 2026

Recently, I wrote an article with potential sources of funding for agricultural businesses. Looking for funding sources can be time-consuming, but the real work begins when you have selected a funding agency. Grants are often highly competitive so attention to detail and taking the time for a well thought out grant application is critical. I've written quite a few types of grants and had some success over the years. Here are a few of my top tips for writing grants.

Before you do anything, read the funders grant guidelines. This is often called the "request for proposal" (RFP). Some funders may even request a pre-proposal which is a much shorter application to evaluate if your proposed project fits their funding criteria. Some RFPs are cumbersome and lengthy, but understanding the organization's goals, criteria, deadlines and requirements is critical. One piece missing from your application may be enough to drop you from the pool of applicants.

Next, start to put together the application. I recommend beginning with your project's goals and objectives. If your goals do not match those of the funders, then it may not be worth the time and effort to put in a grant. When I'm writing grants, I'm very strategic to utilize similar language that is in the RFP so that it is easy for grant reviewers to see that the project aligns with their organization or agency.

Another important component of the grant application is defining the need. Funders want to know why the project matters and how it will make a difference in the community or your business. They want to know if they provide funding for the project that it would be put to good use and isn't filling an unnecessary need. Keep it simple but utilize data or stories to illustrate the need.

Next, define measurable outcomes of your project. For example, saying that a livestock water development project will increase pasture utilization

by 20% is more measurable than simply saying "cows will use the pasture better." However, make sure that the outcome is truly attainable and something you can actually measure, because if your grant application is successful then you'll likely need to do a report at the end to report if you met your project goals and anticipated outcomes.

The budget is another vital component of a grant application. Funders want a big picture of how much the project will cost. Be specific. If you are asking for \$20,000 then break it down by how much each part of the project will cost. Be realistic but give yourself a little flexibility due to rising costs. Some grants, especially government grants, can take a while to process and results in costs increasing during this period. Also don't forget to consider labor as part of your budget. Don't inflate your costs too much though because that can be a big red flag for grant reviewers.

After you get a draft of your grant application done, ask someone to review it. I'd suggest asking someone who is familiar with your proposed project in addition to someone who is not. They will view the application through different points of view and provide excellent feedback including project components that might be missing areas that are difficult to understand. Proofreading boosts professionalism and makes it clear to the funder that you are taking the application seriously.

Before you submit anything, reread the RFP one last time. Did you forget anything? Some grant applications will even ask for videos or supplemental materials such as tax returns, organizational officers or copies of deeds. Give yourself plenty of time to collect the materials that you need. A late grant application is almost certain not to be accepted.

Writing grants takes time and attention to detail. If you find this process overwhelming or lack the time to make it happen, there are professionals who can help with the process. In some cases, nonprofits can help you write grants if they fit within their organizational mission. Ag Development Center Montana Business Assistance Connection, our area economic development organization and Food & Ag Development Center, can sometimes help with grants that are business related. There are also for-profit organizations that write grants professionally. Some charge a flat or hourly rate for their time while others may charge a percentage of the grant.

Grant writing classes are also offered periodically through various organizations and are a great way to learn more about the process if you are going to be writing multiple grants.

A photograph of a piece of light-colored paper with a dark, textured tab at the top, pinned to a grey background. The paper contains a quote in a serif font.

"Grant writing is easy and fun!" – said no one, ever

# BROADWATER COMMUNITY CONNECTIONS NEWSLETTER



Science • Technology • Outdoors  
Knowledge • Entrepreneurship

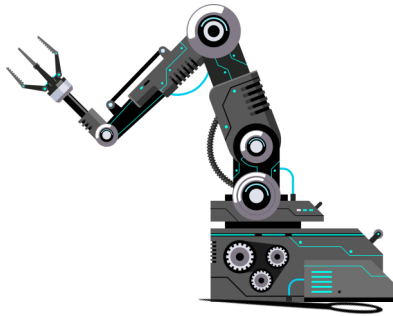


Broadwater County  
Development Corporation  
P.O. Box 698, Townsend, MT 59644

## STOKE Updates

The STOKE directors have been busy with year end activities, planning, budgeting, new programs, and fund raising. With a proposed budget over \$150,000, all these necessary duties and programs require constant discussions to keep the organization running smoothly.

Programs running now are the FIRST robotics teams which are just starting their competition season. These kids have competed very well in the last couple years, requiring the board to build a beautiful trophy case, constructed and donated by local cabinet maker Ron Sal-laday. And thanks to their very dedicated coaches to keep them competitive.



The skiing club will start on January 16<sup>th</sup> with a full roster and new transportation. STOKE was able to purchase a 2023 Ford 16 passenger Transit van from a very gracious donation from Fritz Homann and his company HomanIT. This a very

popular program.

We have a new neighbor at the Pottery Guild; 110 N. Spruce St. Mike Conrad has purchased more glass blowing equipment and is setting up a glassblowing school for kids and adults. Mike has studied under the big boys in Italy and has been an instructor for many years.

In addition to our upcoming 5<sup>th</sup> **Annual Valentine's Day Dinner Fundraiser (see flyer)**, the STOKE board has just hired professional grant writer Elisa Fiaschetti, Fiddlehead Consulting, to research and write grants for us. With our ever-expanding programs and budget, we feel this will be very beneficial for our funding drive and take the pressure off our board members.



STOKE has served over 300-400 kids, maybe more, over the years since we started in 2020, both from public school and homeschools. We have helped many disadvantaged and underserved kids along with many just looking for different opportunities and activities.

Submitted by John Hahn

## BCDC Trails Vision Plan and Current Implementation

The excitement is building! The BCDC (Broadwater County Development Corp.) Trails Committee, chaired by Al Christophersen, has finished the Trails Vision Plan and has been posted on BCDC's website, <https://townsendmt.com>. This is a very extensive compilation of existing, proposed, and suggested pedestrian, cycle, and equestrian trails. This also distinguishes between routes and trails with routes including vehicular travel but can be

used for nonmotorized travel. The plan also includes a paddlers trail originating at the Headwaters of the Missouri in Gallatin County but



continues through Broadwater County ending now at the new proposed boat ramp at the Indian Road Campgrounds. This trail had not been recognized until it was discovered later in the process.

We are now ready to start implementing some of the proposed trail systems. To get our feet wet, a FWP

Trails Stewardship Grant is being targeted as Phase 1 which will help us do some much-needed maintenance on the 25-year-old asphalt trail running north of Townsend to the Indian Road Campgrounds. BCDC has signed an agreement with Interstate Engineering to write the grant which is due the end of January. If we are successful on the grant, the maintenance work is anticipated to be completed in August although it can be extended up to three years to complete the work.

Other proposed trails are a trail from Harrison Street to the Fairgrounds or Hwy 284, a trail inside a ten-acre county owned plot on Centennial Lane, a trail along Canton Lane to the softball field, and a trail From Hwy 287/12 east to the Silos Recreation Area. There are other trails in the Vision Plan that will be evaluated as the need or funding arises. The Paddlers' Trail will also be easy to be established as there are only a few signs to place and minor ramp work to be done.

There is hope that these trails can be digitized to provide an easy way for people to locate trail heads and routes.

To request information or offer support to the Trails committee, please email us at [bcdc@mt.net](mailto:bcdc@mt.net).

Submitted by John Hahn





# *5th Annual Valentine's Day Fund Raiser*

*Saturday  
Feb 14th  
5:00 to 8:30*

*At The Lodge,  
131 S. Spruce,  
Townsend, MT*

*The night will be filled with Student Presentations  
and a Tri Tip Beef Roast full course dinner catered  
by John and Missy Rauser. Dessert by STOKE's  
Cooking Class. A really special night! Don't miss it!*

*Tickets Available soon at Bird's Nest  
or our website: [stokemt.org](http://stokemt.org)*

*Only 70 Tickets  
Available*

*50-50,  
Silent Auction  
Charcuterie boards,  
Pottery Bowl  
Live Auction*

*Live Music  
Youth Presentations  
5:30—6:30  
Come meet the Kids*



# BROADWATER COMMUNITY CONNECTIONS NEWSLETTER



In Partnership With:



## FAR OUT AND WAITING

What To Do While Waiting For Emergency Medical Services To Arrive In Rural Areas, Farms, and Ranches

+ ONE (1) Pesticide Applicators Credit offered

January 26th | 5:30-8:00pm  
Townsend Schools - Community Room



PO Box 2447  
Great Falls, MT 59403

**Location: Townsend Schools - Community Room, 201 N Spruce, Townsend, MT 59644**  
**Dinner at 5:30 pm, Training 6:00-8:00 pm**

**ONE (1) Pesticide Applicators Credit offered**  
**Join us for:**

- Presentation & Hands-on trainings by Central Valley Fire Department's **Chief Jay Wittwer & Ashleigh Phillips**, owner of Backcountry Medical Supply
- **Topics include:**
  - Stop the Bleed
  - Using AEDs
  - Hands-only CPR

On average, rural communities have a 30+ minute wait for EMS to arrive. Learn what you can do while waiting to help save a life!

- **FREE** Dinner provided by MFU
- **Registration required**

*Free and open to all MFU members, friends, and the public*

Use the QR code to register or visit

[www.montanafarmersunion.com](http://www.montanafarmersunion.com)

Questions? Samantha Ferrat 406.949.0869  
[sferrat@montanafarmersunion.com](mailto:sferrat@montanafarmersunion.com)





## PUBLIC PARTICIPATION NEEDED



# COMMUNITY WILDFIRE AND VULNERABILITY ASSESSMENT PRESENTATION & BRIEFING

The Montana Department of Military Affairs (DMA), in partnership with Chloeta, is presenting the findings of the Community Vulnerability Assessment and a Wildfire Risk Assessment focused on communities surrounding Fort Harrison Training Area and the Limestone Hills Training Area. Together, these assessments examine wildfire risk and related vulnerabilities affecting infrastructure, emergency response capabilities, communication systems, and essential community resources.

This briefing provides an overview of key findings and identified challenges, followed by an opportunity for residents and stakeholders to share feedback based on their experiences with wildfire and other hazards. Input received will help validate assessment findings, highlight local priorities, and inform targeted mitigation and coordination strategies that support improved preparedness, public safety, and long-term regional resilience.

### PUBLIC PARTICIPATION IN THE VULNERABILITY ASSESSMENT PLAN.

A **Community Vulnerability Assessment** identifies the people, infrastructure, and essential systems most at risk from wildfire and related secondary impacts, such as evacuation challenges, power outages, smoke exposure, and post-fire flooding. It examines social, economic, and infrastructure conditions that influence a community's ability to prepare for, respond to, and recover from wildfire events. This assessment is critical for understanding how these factors affect communities surrounding Fort Harrison and the Limestone Hills, and for guiding strategies that strengthen emergency preparedness, coordination, and long-term resilience.

### PUBLIC PARTICIPATION IN THE WILDFIRE RISK ASSESSMENT.

A **Wildfire Risk Assessment** evaluates where and how wildfire is most likely to occur, how fire is expected to behave, and what assets are most exposed to wildfire impacts. It examines vegetation and fuels, topography, weather patterns, access and response constraints, and the proximity of development in and near the wildland-urban interface. This assessment is essential for understanding wildfire threats to communities surrounding Fort Harrison and the Limestone Hills, and for guiding targeted mitigation actions that reduce risk, improve response effectiveness, and strengthen long-term resilience.

## WHY PARTICIPATE

Increased awareness of local risks & vulnerabilities in your community

Stronger Emergency Preparedness to help safeguard lives, property, & essential services

Creation of more resilient communities; bounce-back from disasters faster!

## PUBLIC OPEN COMMENT: COMMUNITY VULNERABILITY & WILDFIRE RISK ASSESSMENT

Lewis & Clark County Residents  
5 PM  
14 January 2026



Broadwater County Residents  
5 PM  
15 January 2026





## NON-PROFITS AND OTHER BENEFICIAL COMMUNITY ORGANIZATIONS

Organization Name	Contact Name	Email Address
American Foundation for Suicide Prevention	Katie Levine	klevine@afsp.org
American Legion Auxiliary Broadwater Unit #42	Debbie Westfall	alawestfall@gmail.com
American Legion Broadwater Post 42	Larry Westfall	broadwaterpost42@gmail.com
Association of Montana Turf, Ornamental, and Pest Professionals	Trudie Southwick	amtopp@amtopp.org
Big Sky Autism Project	Monique Prevel	bigskyautismproject@gmail.com
Billings Clinic Broadwater (Formerly Broadwater Health Center)	Shienne Spatzierath	sspatzierath@billingsclinic.org
Billings Clinic Broadwater Auxiliary	Donna Harper	vdoshowcase@yahoo.com
Boy Scouts of America	Josh Dutoit	joshua.dutoit@scouting.org
Broadwater Christmas Connection	Bret Anderson	bret.anderson77@yahoo.com
Broadwater Community Foundation	Carole Plymale	carole.plymale@gmail.com
Broadwater Community Health Foundation	Kwinci Tatarka	kktatarka@gmail.com
Broadwater Community Library (School and Public)	Angela Giono	agiono@townsend.k12.mt.us
Broadwater Community Theater	Destani Spencer	destanispencer54@gmail.com
Broadwater Conservation District	Denise Donnelly	broadwatercd@gmail.com
Broadwater County 4H Council	Karen Noyes	jknoyes@MT.net
Broadwater County Cattle Women	Melanie Kimpton Weyant	broadwatercattlewomen@gmail.com
Broadwater County Development Corporation	John Hahn	bcde@mt.net
Broadwater County Fair Board	Jessica Erickson	fair@co.broadwater.mt.us
Broadwater County Farm Bureau	Gail Vennes	glvennes@mt.net
Broadwater County Lions Club	Richard Heida	iimimby@gmail.com
Broadwater County Public Health	Ruby Taylor	rtaylor@co.broadwater.mt.us
Broadwater County Search & Rescue	John Hedstrom	hedstromautorepair@gmail.com
Broadwater County Social Services Committee	Jill Flynn	Jill.flynn.12@gmail.com
Broadwater County Trust Board	Aubra Lewis	aubra.lewis@broadwatercountymt.gov
Broadwater County Victim Witness Advocate	Brooke Dolan	bdolan@co.broadwater.mt.us
Broadwater County/City of Townsend Parks & Recreation Board	Carol Hatfield	carolhatfield406@gmail.com
Broadwater Educational Foundation	Jackie Smith	BroadwaterEdFoundation@gmail.com
Broadwater FFA	Jemma Loughery	jloughery@townsend.k12.mt.us
Broadwater FFA Alumni and Supporters	Hugh Braaten	hugh@bestsod.com
Broadwater Food Pantry	Daryl Blumhagen	dumb@mt.net
Broadwater Historical Society & Museum	Brian Kimpton	bkimpton57@gmail.com
Broadwater Mental Health Local Advisory Council	Mary Ellen Schnur	meventures@3riversdbs.net
Broadwater Rod and Gun Club	Brad Peck	debi.randolph@gmail.com
Broadwater Rodeo and Fair Association	Wynn Meehan	broadwaterrodeo@gmail.com
Broadwater Rural Fire District	Ed Shindoll	bcrfdfire@live.com;
Broadwater Shrine Club	Chuck McLane	cegamclane2@gmail.com
Broadwater-Missouri Water Users	Daniel Davis	bmwu@mt.net
Bulldog Pups Preschool	Jennifer Olinger	teamolinger5@gmail.com
Canton Church Restoration Inc.	Victor Sample	victorsample@gmail.com
Canyon Ferry Physical Therapy	Dr. Wanda Lambott	canyonferrypt@mt.net
Circle 100 Club	Judy Gillespie	gillespiej4@msn.com
City of Townsend	Kari Williams	kari@townsendmontana.net
Crimson Bluff's Chapter of Lewis and Clark Trail Heritage Foundation	Mike Castleberry	radersburger@gmail.com



## NON-PROFITS AND OTHER BENEFICIAL COMMUNITY ORGANIZATIONS

Organization Name	Contact Name	Email Address
Deep Creek Cemetery Association	John Hahn	hahnsupply@mt.net
Elkhorn Community Fellowship Church	Eric Crusch	icrusch2003@yahoo.com
Faith Baptist Church	Mike Wenzel	faithbaptisttownsend@gmail.com
Family Promise of Greater Helena	Renee Bauer	director@familypromisehelena.org
Friends in Fellowship - Townsend	Paul Kroeger	pkroeger@itstriangle.com
Girl Scouts of America	Melissa Meissner	melissagunderjohn@yahoo.com
Helena Playable Playgrounds	Stacy Sommer	playablepark@yahoo.com:
Helping Hands Townsend	Dee Gannon	deedaleame@yahoo.com
Holy Cross Catholic Church	Father Cody Williams	frwilliams@holycrossmt.org
Infinity Hope Counseling, LLC	Jennifer Beatty	jennifer@infinitehopellc.com
Knights of Columbus	Richard Majszak	richard.majszak@gmail.com
Missouri Valley Marketing	Rachael Elliot-Brug	readingleaves406@gmail.com
Motion and Mind	Katherine Humphrey	mm3hab@gmail.com
Mountain Valley Church (Formerly Alliance Bible Church)	Eric Krueger	erickruegercma@gmail.com
MSU Extension – Broadwater County	Allison Kosto	broadwater@montana.edu
MT Business Assistance Connection	Brian Obert	bobert@mbac.biz
MT Peer Network	Melinda Holum	Mholom@co.broadwater.Mt.us
MT Youth Apprenticeship Partnership Program	Kelly Creswell	kcreswell@reachhighermontana.org
Old Baldy Recreation Association (Old Baldy Golf Course)		
Pathfinder Childcare	Amanda Hazlett	Amanda.Hazlett@myvillage.com;
Placer School	Gay Ann Masolo	gayannm@yahoo.com
Preserve Broadwater History	Victor Sample	victorsample@gmail.com
Radersburg Baptist Church	Richard Summerlin	
Radersburg Cemetery Association	Brandon Hossfeld	
Radersburg Historical Preservation Inc.	Alan and Deb Smith	alndeb1956@gmail.com;
RMDC Homestead Manor Senior Apartments and Townsend Housing Senior Apartments	Julie Densmore	jdensmore@rmdc.net
Rocky Mountain Breeders Association (RMBA)	Jan Finn	2684hwy284@gmail.com;
Rocky Mountain Development Council (RMDC)	Samara Lynde	slynde@rmdc.net;
Rocky Mountain Development Council, Head Start	Ashley Pena-Larsen	apena@rmdc.net;
Rocky Mountain Development Council-Area IV Agency on Aging, Montana Senior Medicare Patrol (SMP)	Michele Mathot	mmathot@rmdc.net
Rotary Club of Townsend	Jeff Langlins	jclangl@yahoo.com;



## NON-PROFITS AND OTHER BENEFICIAL COMMUNITY ORGANIZATIONS

Organization Name	Contact Name	Email Address
Sapphire Behavioral Health	LaReissa Swenson	lswensonsbh@outlook.com
Sarah Holland Daycare	Sarah Holland	hollandbigsky@q.com
Serenity Point Assisted Living	Heather LaCotta	heather@serenitypointliving.com
Set Free Christian Fellowship Townsend, Inc.	Bill Bergstad	bbergstad@gmail.com
Shepherd of the Valley Lutheran Church	Daryl Blumhagen	dumb@mt.net
Shoot for the Cure Montana	Mary Huth-Al Bodle	bodlehuth@gmail.com
Silver Sage Counseling	Teddy Lewis	teddylewis65@yahoo.com
Silver Springs Assisted Living	Jason George	silverspringsassistedliving@gmail.com
Songbird Pediatric Speech Therapy	Julie Swanson	
St. Peter's Townsend Clinic	Todd Wampler MD	townsendclinic@sphealth.org
STOKE: Science, Technology, Outdoors, Knowledge, Entrepreneurship	Tina Homann	albertinahomann@gmail.com
Survivors of the Storm –Domestic Violence Support Group		kjp06051994@outlook.com
The Church of Jesus Christ of Latter-day Saints	Matt Graham	mattgraham4020@gmail.com
The Friendship Center	Gina Boesdorfer	gina.b@thefriendshipcenter.org
The Learning Place	Chelsea Rauser	chelsearauser@gmail.com
The Lodge of Townsend	Tina Homann	townsendmtlodge@gmail.com
Thrivent Financial	Sarah Hamlen	sarah.hamlen@thrivent.com
Townsend Area Chamber of Commerce	Linda Fautsch	townsend43chamber@gmail.com
Townsend Booster Club	Natalie Horne	townsendboosterclub@gmail.com
Townsend Broadwater County Lions Club	Richard Heida	iimimby@gmail.com
Townsend Farmer's Market	Sheree Beauchamp	hardwayfarm@outlook.com
Townsend Fast Pitch	Erin Fryer	townsendfastpitch@gmail.com
Townsend Garden Club & Study	Marilyn Lane	racing26@mt.net
Townsend Little Guy Wrestling	John O'Dell	jodell@townsend.k12.mt.us
Townsend PTA	Emily Christensen	townsendptainfo@gmail.com
Townsend Riders Horse Club	James Domino	jpdomino406@gmail.com
Townsend School Board	Jason Noyes	jknoyes@mt.net
Townsend School District #1	Brad Racht, Supt	bracht@townsend.k12.mt.us
Townsend Senior Club	Carol Anderson	406-266-3995
Townsend Seventh Day Adventist Church	Craig Vietz	cargo3b@yahoo.com
Townsend Skating Rink, LLC	Joe Horne	natjoehorne@gmail.com
Townsend Tree Board	Patrick Plantenberg	m2andp2@mt.net
Townsend United Methodist Church	Rev. Melelupe Moa	mele@fumcs.org
Townsend Wrestling	John O'Dell	jodell@townsend.k12.mt.us
Trailhead Christian Fellowship Church	Clay & Makenzi Muinzer	clay@trailheadchristianchurch.com
Trauma Informed Advocates	LaReissa Swenson	lswensonsbh@outlook.com
	Julie Swanson	
United Way of the Lewis and Clark Area	Emily McVey	Emily@unitedwaylca.org
Vet2Vet	Lowen Nunn	nunnlowen@gmail.com
Walleyes Unlimited of Montana, Upper Missouri River Chapter	Troy Warburton	umrcwalleyepresident@gmail.com