

## HUNTING



As one of Montana's premier elk, deer, bear, and antelope areas, Broadwater County draws many hunters each year. Local outfitters

take hunters into the finest, most tucked away elk country in the West. Waterfowl and upland birds are also plentiful. The Townsend office of Montana Department of Fish, Wildlife and Parks is happy to provide more information at 406-266-3367 or [fwp.mt.gov/hunting](http://fwp.mt.gov/hunting).

## FISHING



There are dozens of waterways, including spectacular Canyon Ferry Reservoir which holds trout, perch, walleye, and ling. Ice fishing derbies are held annually and the largest wall-

eye tournament in Montana, the Canyon Ferry Walleye Festival, is held in June and sponsored by the Townsend Area Chamber of Commerce. There are numerous high mountain lakes and creeks in addition to the Missouri River that offer fishing for rainbow, brook, and cutthroat trout.

## COMMUNITY EVENTS

Hardly a month goes by without a community-wide event or celebration in Townsend. The biggest include Broadwater Rodeo & Fair during the first weekend of August, the Canyon Ferry Walleye Festival, Fall Fest in early October, and the Christmas Stroll in early December.



Hundreds of local and visitors gather for fun, food, prizes, parades, and other activities including softball tournaments, talent shows, theatre in the park, musical performances, and calf roping most weekends during the summer at the fair grounds.

## WILDLIFE

Broadwater County offers the Canyon Ferry Wildlife Management Area just north of Townsend. This is a great place to find hundreds of bird species. Ospreys, Bald Eagles, Yellow-Throated Warblers, Herons, Great Horned Owls, and Pelicans are just some of the amazing species you might be able to catch in action. This area also boasts several big game species such as deer, moose, elk, and antelope.



## TOWNSEND, MONTANA



PO BOX 947  
TOWNSEND, MT 59644

406-266-4101  
[TOWNSENDMTCHAMBER.COM](http://TOWNSENDMTCHAMBER.COM)  
[TOWNSEND43CHAMBER@GMAIL.COM](mailto:TOWNSEND43CHAMBER@GMAIL.COM)

[TOWNSENDMTCHAMBER.COM](http://TOWNSENDMTCHAMBER.COM)

## EDUCATION

The Townsend Schools K-12 systems is one of Montana's most progressive institutions of public education. The latest computer technology, science and mathematics classes complement robust arts, drama, writing and athletic programs.



## PARKS & RECREATION

Dozens of campgrounds and picnic sites are around Canyon Ferry Reservoir including Indian Creek Campground, Silos Recreation Area & KOA, Yorks Islands, White Earth Recreation Area, Confederate Bay,



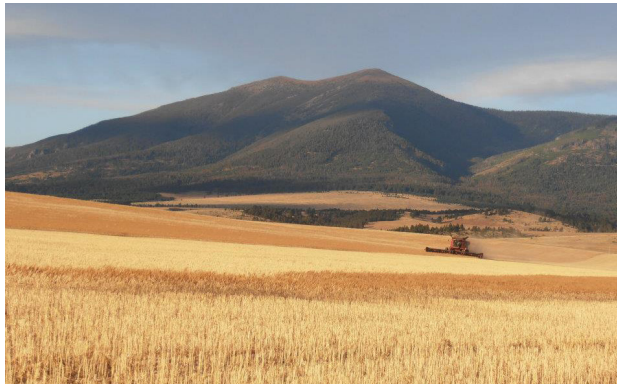
and Goose Bay Marina & Campground. In Townsend, many parks, a heated swimming pool, tennis courts, soccer fields, softball fields, and baseball fields are available.

## HEALTH CARE

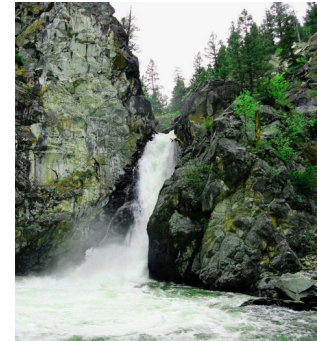
Broadwater Health Center provides a 24-hour emergency room, ambulance services, diagnostic laboratory, radiology department, professional medical services, scheduled and walk-in clinic, physical therapy, speech therapy, behavioral health team. A 25-bed Critical Access Hospital, Broadwater Health Center is there for all your acute, swing bed, and longterm care needs. [Broadwaterhealthcenter.com](http://Broadwaterhealthcenter.com)

## AGRICULTURE

Broadwater County has about 287 farms with a total of 476,797 acres in farmland. The average farm size is 1,661 acres. Broadwater County leads the state in alfalfa hay production with 99,000 tons of alfalfa hay on 22,000 acres. The county also produces seed potatoes, forage seed crops, wheat, barley, dairy, sod, sheep, cattle and boasts a new greenhouse that will produce leafy greens.



## HIKING



The mountains and forest surrounding the city of Townsend are crisscrossed with foot trails maintained by the U.S. Forest Service. A variety of elevations make trails accessible to hikers of all levels. From Deep Creek east

of Townsend, a trail system follows the Big Belts past towering Mount Baldy and Mount Edith, offering access to some of the area's most beautiful high-country lakes. Trails take hikers into rugged country along Crow Creek near Radersburg. For more information, contact the Townsend Ranger District office or visit: <http://fs.fed.us/r1/helena>

## GOLF

With the Big Belt Mountain Range as a scenic backdrop, Old Baldy Golf Course is a challenging 9 hole facility providing fun and leisure northeast of Townsend. 406-461-5116

